

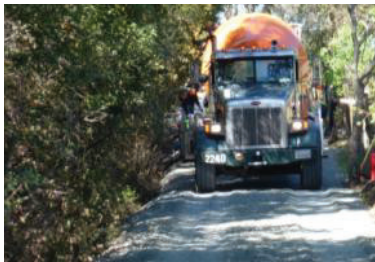
TRAILrider® Towing & Lifting Requirements

TRAILrider® does not have a motor. Instead, the mix truck tows the slipform paver. The mixer must have 20-ton tow hooks or a center tow ring to allow attachment of tow chains. Hooking to the bumper is not allowed. 20-ton hooks are necessary as tremendous stress can be created if the driver jerks the slack out of a chain. We certainly do not want a box full of concrete with a broken chain or tow hook!

The paver “floats” on the fresh concrete so mixers towing the paver need little more power than a low gear idle. Even on a gravel base, trucks rarely have difficulty. On up-sloping hills it is best to pave on compacted rock or dirt for traction.



Center mounted tow ring works best.



20 ton hooks on both frame rails work too.



Attachment to paver.

TRAILrider® is perfect for narrow lanes and cart paths. If the truck fits– the paver will fit. Even in this extreme case where the track is literally hanging over the edge, the paver simply follows the closely attached truck and paves only inches from the edge.

TRAILrider® can be loaded and unloaded (top center) with a backhoe, front loader, excavator or fork lift with long forks.

Training and mix design support for ready mix suppliers is provided by Evolution Paving Resources.



Towing with 4x4 Backhoe is optional.